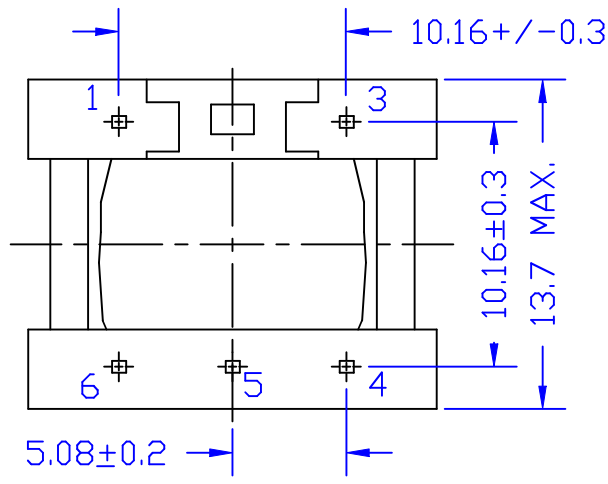


3.5 +/- 0.5
 Ø0.6 OR 0.5 SQ. PIN



BOTTOM VIEW

ELECTRICAL CHARACTERISTICS:

1. D.C.R. : PIN 1-3 = 52 OHM +/-10% PIN 4-6 = 127 OHM +/-10%
2. INDUCTANCE (@ 1KHZ, 1Vrms) 1-3 = 800mH MIN.
3. IMPEDANCE(@1KHZ, 1Vrms, 4-6 W/H 600 OHM): 1-3=600 OHM +/-5%
4. INSERTION LOSS (@1KHZ, 0dBm) : 1.7dB MAX.
5. FREQ. RESP. (REF. 1KHZ, @300HZ TO 3.5KHZ) : +/- 0.3dB
6. RETURN LOSS : @200HZ = 25dB MIN.
 (REF. 600 OHM) @1KHZ = 25dB MIN.
 @4KHZ = 25dB MIN.
7. TURNS RATIO (@12KHZ, 1Vrms) : 4-6 : 1-3 = 1.125 +/-1.5%
8. POLARITY : PIN 1-4 INPHASE
9. DISTORTION (@600HZ, -10dBm) : -84dB MAX.
10. HI-POT = 3750VAC, 1mA, 1 MINUTE (PRI.-SEC. ONLY)
11. ROHS COMPLIANCE

						Atech [®] Atech Technology Co., Ltd. TEL:(02)2794-6667 FAX:(02)2794-8004	TITLE 600 : 600 TRANSFORMER	
							DWG. NO. ATS-220R	
						UNITS:	SAFETY	
						DATE	P/N:	
REVISIONS						SHEET 1 OF 1 DRAW		